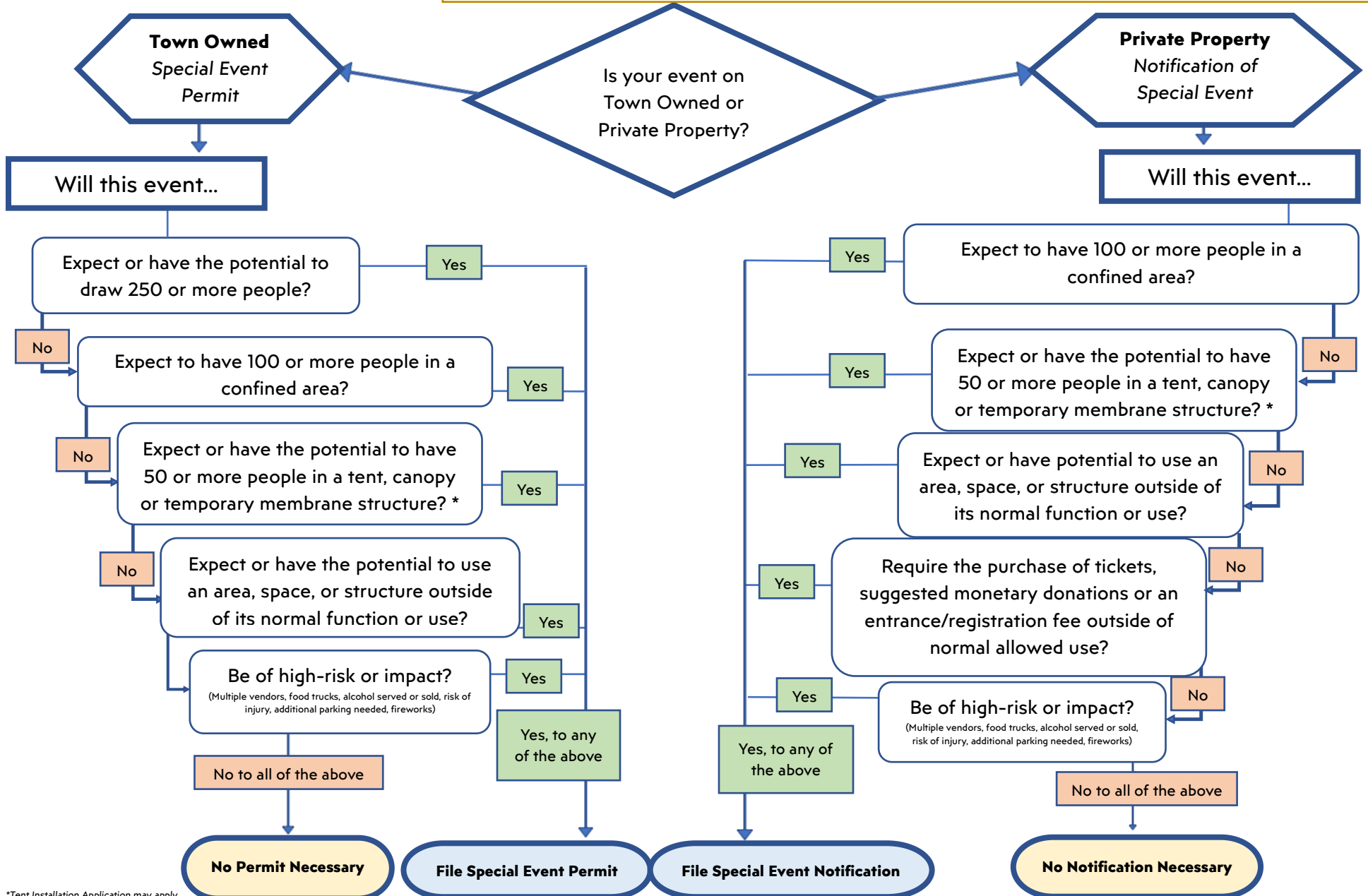


Special Events Flowchart

Exemptions:

- Private gatherings on residential private property, not open to the public, no charge for admission.
- Events expected to draw less than 250 people and no tents or tents two hundred (200) square feet or under or canopies four hundred (400) square feet or under.
- Events on all properties with any size tent and expected to draw less than fifty (50) people.
- Funeral processions and/or memorial services and impromptu assemblies.
- Organized sporting events
- Events and gatherings on a non-profit organization property or non-residential private property that **is** a part of the normal function or course of business at the location.



*Tent Installation Application may apply