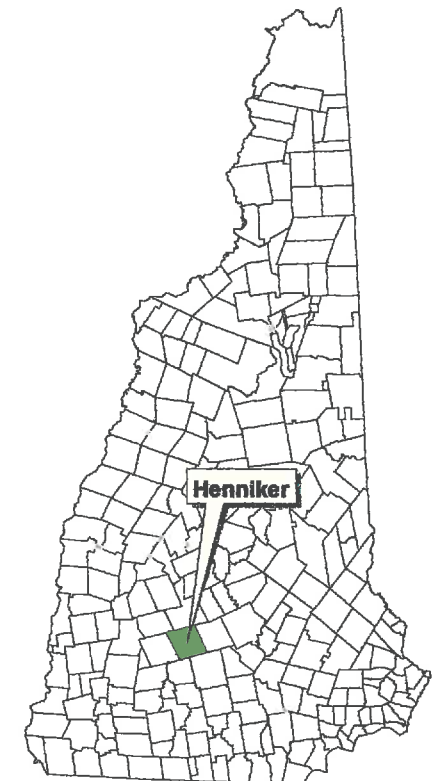
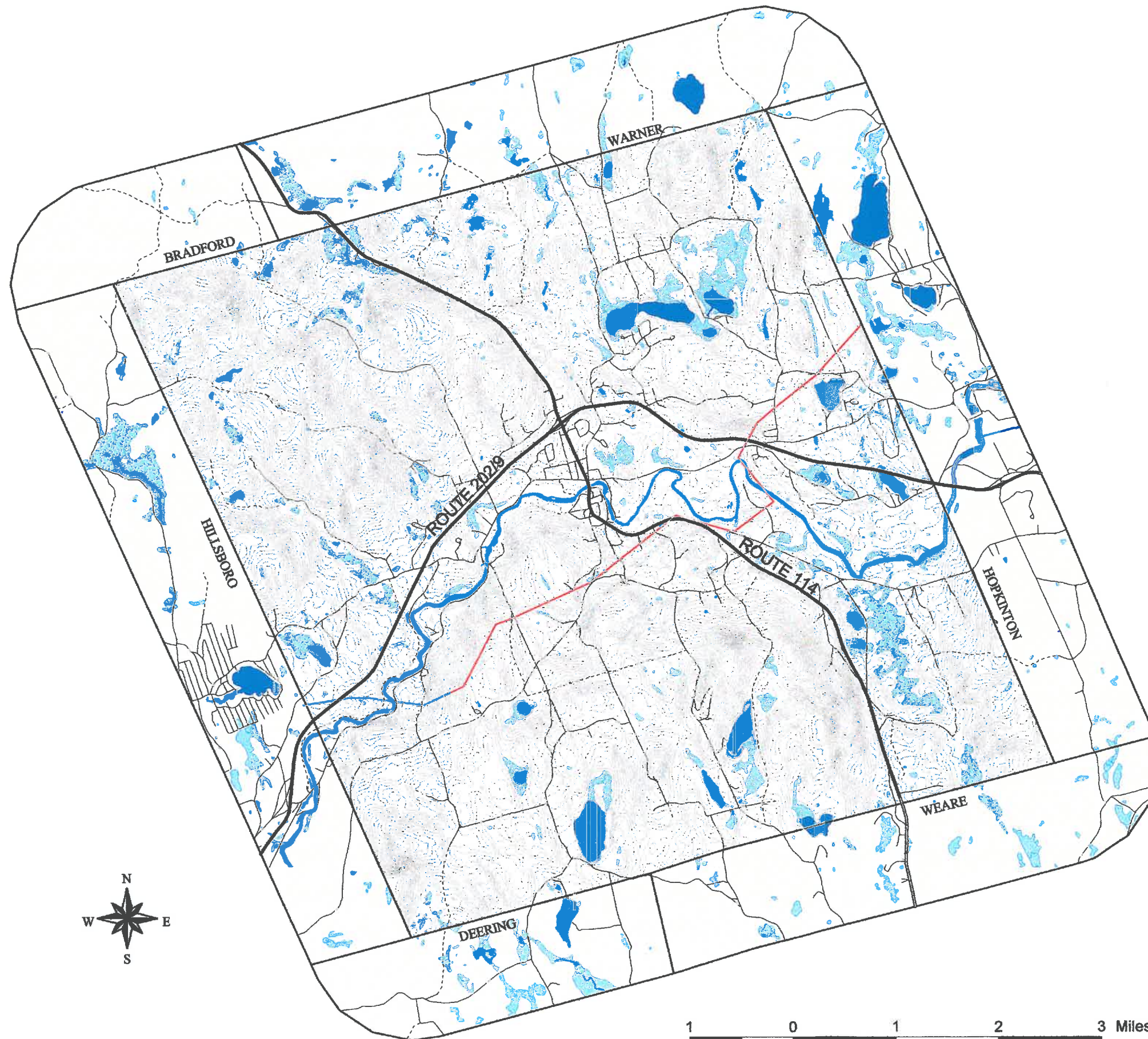






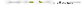


Map I Henniker, NH Base Map



LEGEND

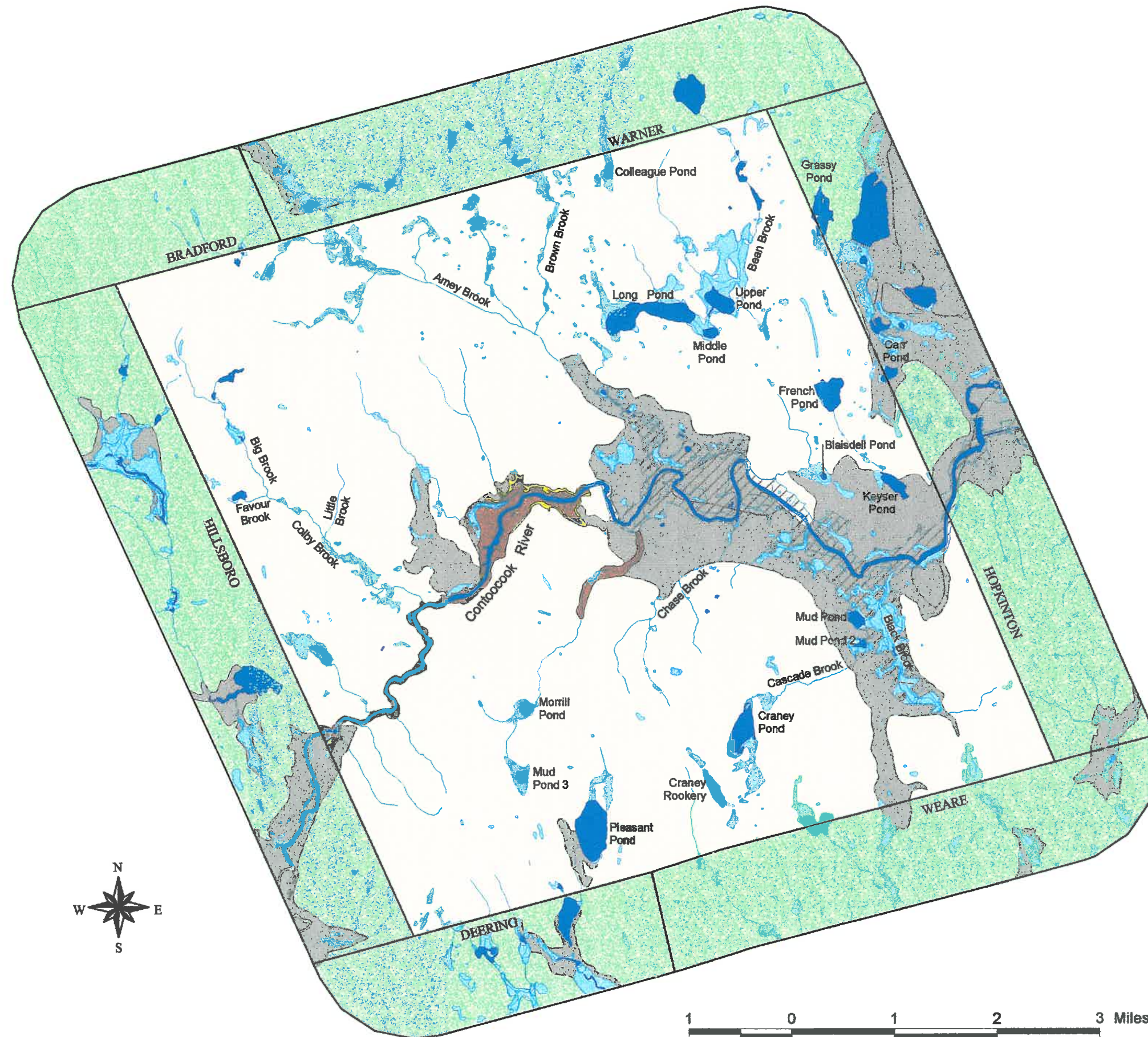
-  Major Roads
-  Roads
-  Class VI Roads
-  Powerlines
-  Surface Waters
-  Wetlands
-  USGS 20 ft Contours

DATA SOURCES:
NH GRANIT (1:24,000)
Road base supplied by the Central NH Regional Planning Commission.

Map Created by Denise Rico for the Henniker Conservation Commission
December 1, 2000.
Revised: January 25, 2001, April 9, 2002, August 23, 2002, September 6, 2002.

Digital data in NH GRANIT represent the efforts of the contributing agencies to record information from the cited source materials. Complex Systems Research Center (CSRC), under contract to the Office of State Planning (OSP), and in consultation with cooperating agencies, maintains a continuing program to identify and correct errors in these data. Neither OSP nor CSRC make any claim as to the validity or reliability or to any implied uses of these data.

Map II Henniker, NH Water Resources



LEGEND

- Surface Waters
- Streams
- Wetlands from National Wetlands Inventory
- Hopkinton-Everett Flood Control Reservoir
- Stratified Drift Aquifer
- FEMA Floodplain**
 - 100 Year
 - 500 Year

DATA SOURCES:
NH GRANIT (1:24,000)

Map Created by Denise Rico for the Henniker Conservation Commission
December 1, 2000.
Revised: January 25, 2001, April 9, 2002, August 23, 2002, September 6, 2002.

Digital data in NH GRANIT represent the efforts of the contributing agencies to record information from the cited source materials. Complex Systems Research Center (CSRC), under contract to the Office of State Planning (OSP), and in consultation with cooperating agencies, maintains a continuing program to identify and correct errors in these data. Neither OSP nor CSRC make any claim as to the validity or reliability or to any implied uses of these data.

Map III Henniker, NH Land Resources



LEGEND

- Major Roads
- Roads
- Powerlines
- Surface Waters
- ▨ Federally-owned Lands
- State-owned Lands
- Town-owned Conservation Land
- Other Town-owned Parcels
- Privately Protected Lands
- Unfragmented Lands Outside of Henniker
- Unfragmented Lands Within Henniker
 - 90 - 150 acres
 - 150 - 300 acres
 - 300 - 500 acres
 - over 500 acres

DATA SOURCES:
NH GRANIT (1:24,000)
Road base supplied by the Central NH Regional Planning Commission.
Map Created by Denise Rico for the Henniker Conservation Commission
December 1, 2000.
Revised: January 25, 2001, April 9, 2002, August 23, 2002.

Digital data in NH GRANIT represent the efforts of the contributing agencies to record information from the cited source materials. Complex Systems Research Center (CSRC), under contract to the Office of State Planning (OSP), and in consultation with cooperating agencies, maintains a continuing program to identify and correct errors in these data. Neither OSP nor CSRC make any claim as to the validity or reliability or to any implied uses of these data.

Map IV Henniker, NH Trails and Recreational Rights-of-Way



LEGEND

- Surface Waters
- Streams
- Wetlands
- Roads
- Powerlines
- Federally-owned Lands
- State-owned Lands
- Town-owned Conservation Land
- Other Town-owned Parcels
- Privately Protected Lands
- Trails & Recreational Rights-of-Way**
- Railroad Bed
- Private
- Snowmobile

DATA SOURCES:
NH GRANIT (1:24,000)
Road base and trails data supplied by the Central NH Regional Planning Commission.

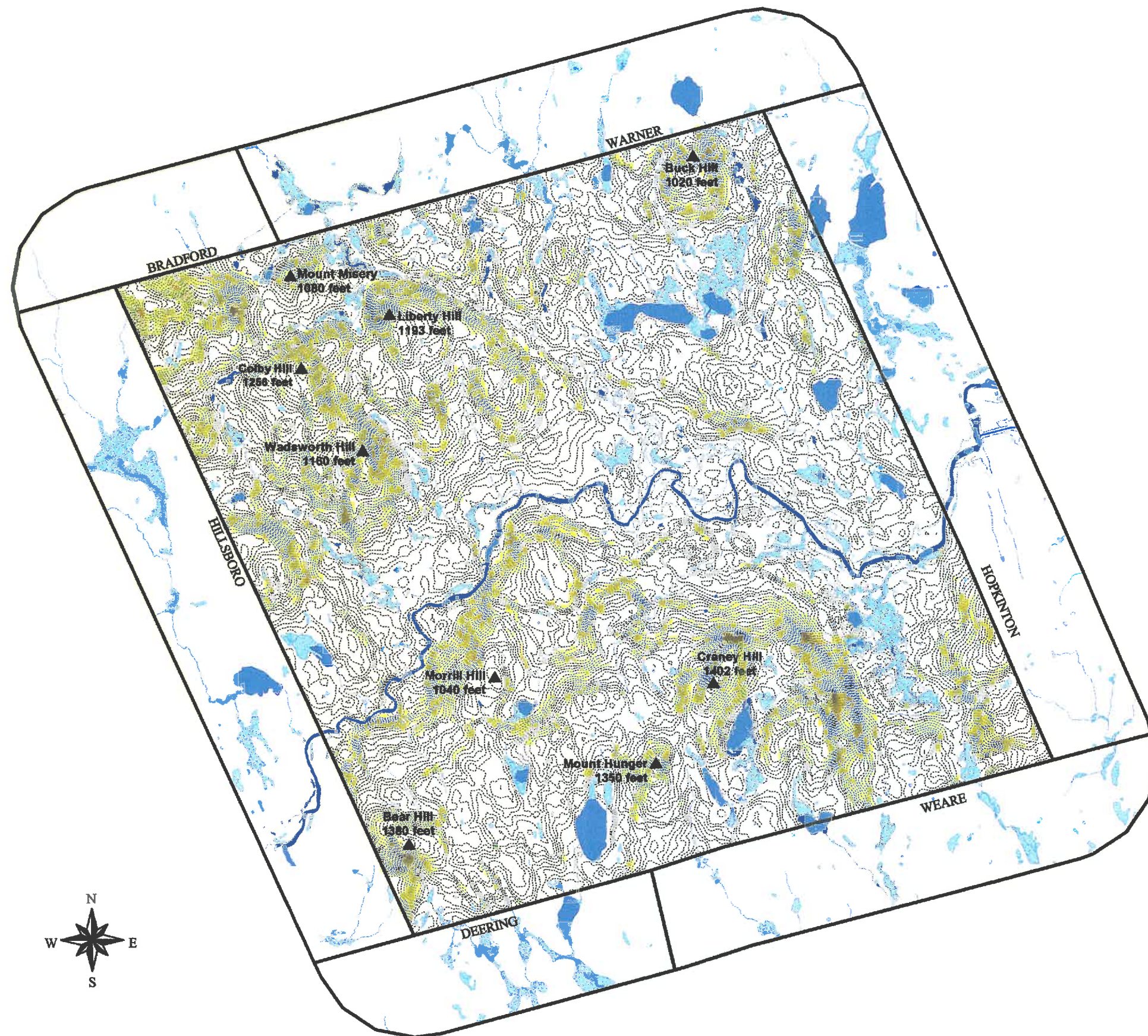
Map Created by Denise Rico for the Henniker Conservation Commission
December 1, 2000.
Revised: January 25, 2001, April 9, 2002, August 23, 2002, September 16, 2002.

Digital data in NH GRANIT represent the efforts of the contributing agencies to record information from the cited source materials. Complex Systems Research Center (CSRC), under contract to the Office of State Planning (OSP), and in consultation with cooperating agencies, maintains a continuing program to identify and correct errors in these data. Neither OSP nor CSRC make any claim as to the validity or reliability or to any implied uses of these data.

Map V

Henniker, NH

Promontories & Steep Slopes



LEGEND

- Surface Waters
 - Streams
 - USGS 20 ft Contours
 - Promontories
- Slopes**
- 0 - 8 %
 - 8 - 15%
 - 15 - 20%
 - 20 - 30%



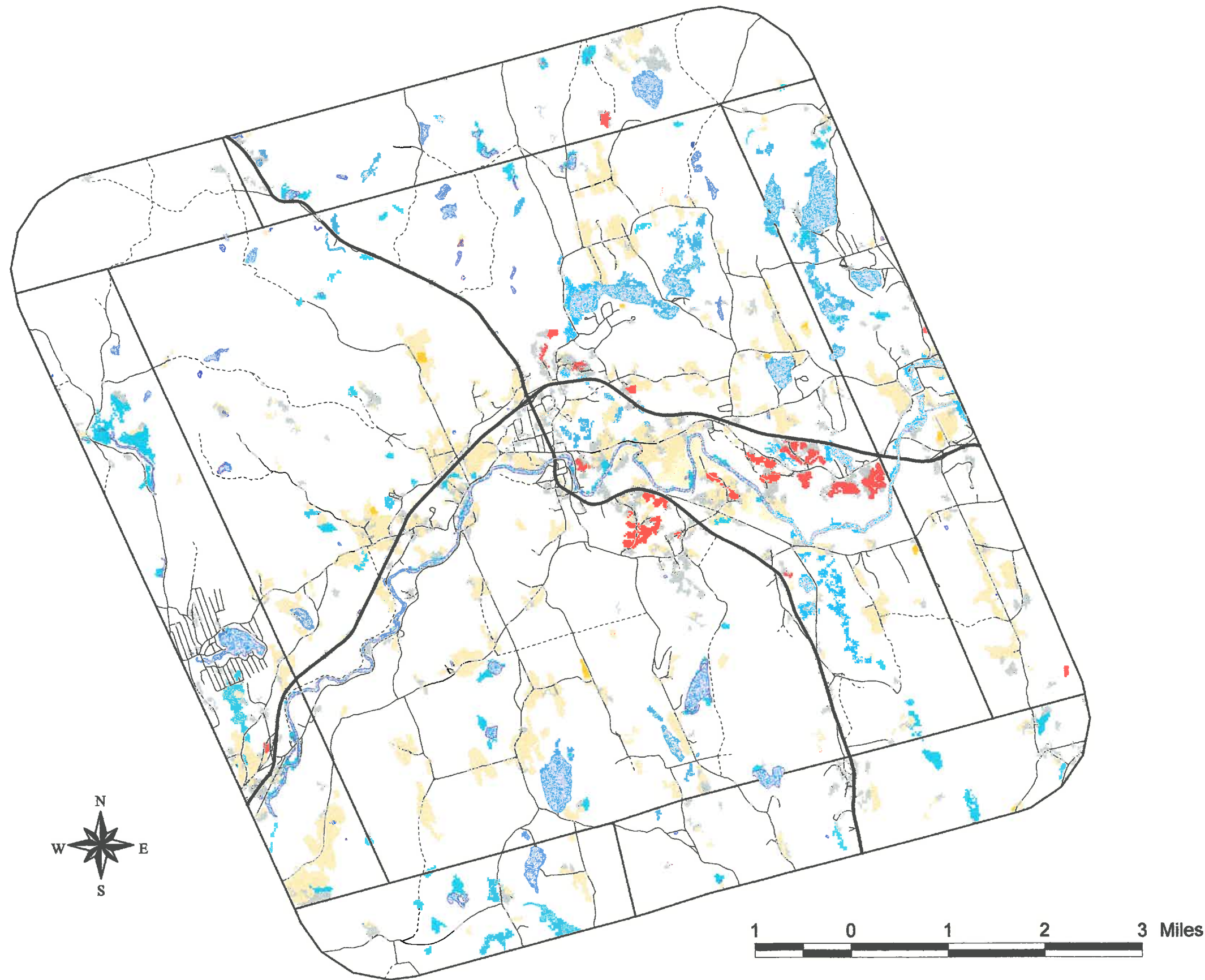
1 0 1 2 3 Miles

DATA SOURCES:
NH GRANIT (1:24,000)


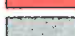
Map Created by Denise Rico for the Henniker Conservation Commission
December 1, 2000.
Revised: January 25, 2001, April 9, 2002, August 23, 2002, September 6, 2002.

Digital data in NH GRANIT represent the efforts of the contributing agencies to record information from the cited source materials. Complex Systems Research Center (CSRC), under contract to the Office of State Planning (OSP), and in consultation with cooperating agencies, maintains a continuing program to identify and correct errors in these data. Neither OSP nor CSRC make any claim as to the validity or reliability or to any implied uses of these data.

Map VII Henniker, NH Agricultural & Other Open Lands



LEGEND

-  Surface Waters
-  Major Roads
-  Roads
-  Row Crops
-  Hay/Pasture
-  Orchards
-  Non-forested Wetland
-  Disturbed
-  Other Cleared

DATA SOURCES:
NH GRANIT (1:24,000) NH Land Cover Assessment 2001

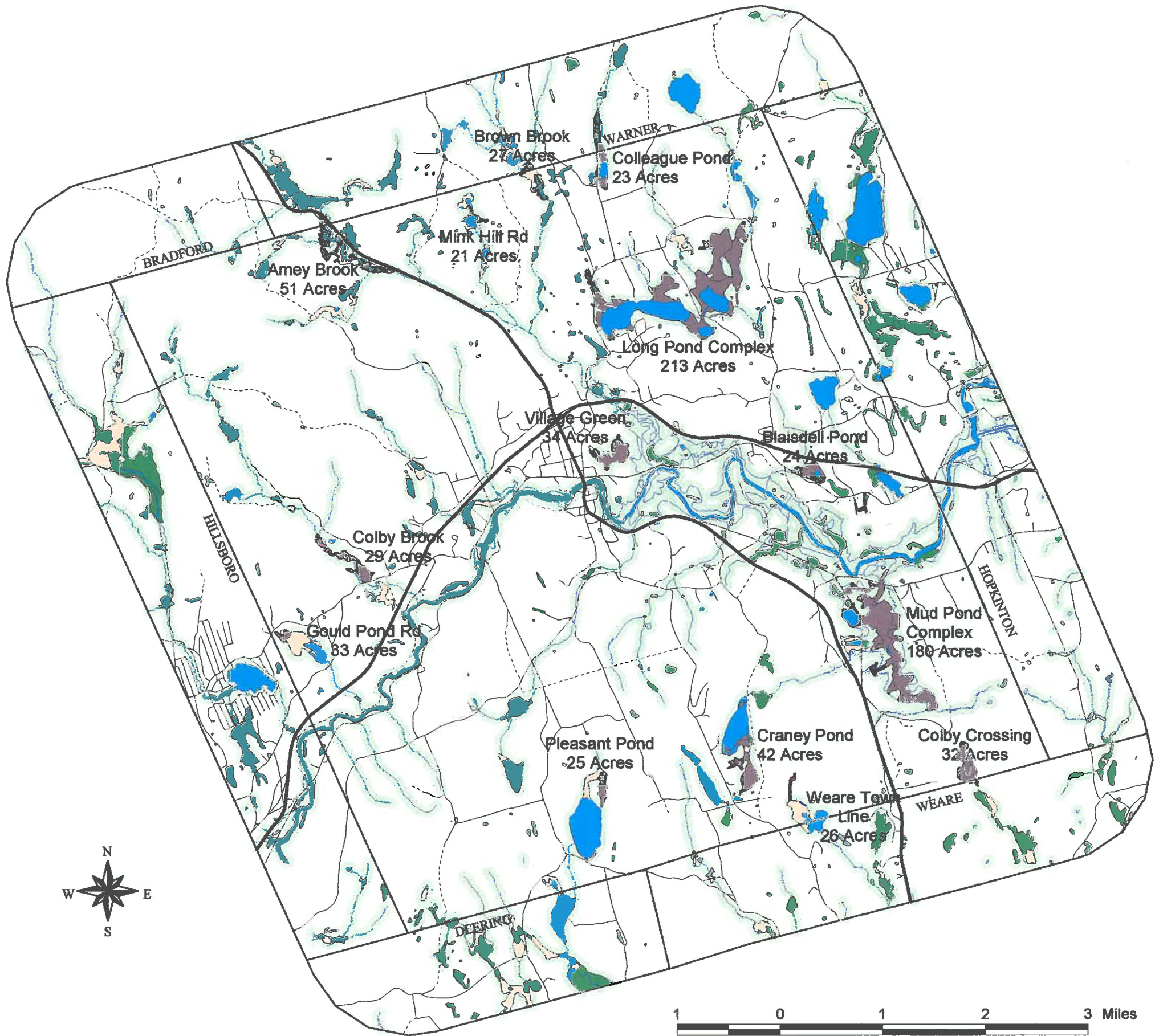
Map created by Denise Rico for the Henniker Conservation Commission
September 13, 2002.

Digital data in NH GRANIT represent the efforts of contributing agencies to record information from the cited source materials. Complex Systems Research Center (CSRC), under contract to the Office of State Planning (OSP), and in consultation with cooperating agencies, maintains a continuing program to identify and correct errors in these data. Neither OSP nor CSRC make any claim as to the validity or reliability or to any implied uses of these data.

Map VIII

Henniker, NH

Riparian and Wetland Habitat



LEGEND

- Roads
- Surface Waters
- Streams
- Wetland Complexes over 20 Acres
- Palustrine Emergent Marsh
- Other Wetlands
- 300' Riparian Buffer

DATA SOURCES:
NH GRANIT (1:24,000)

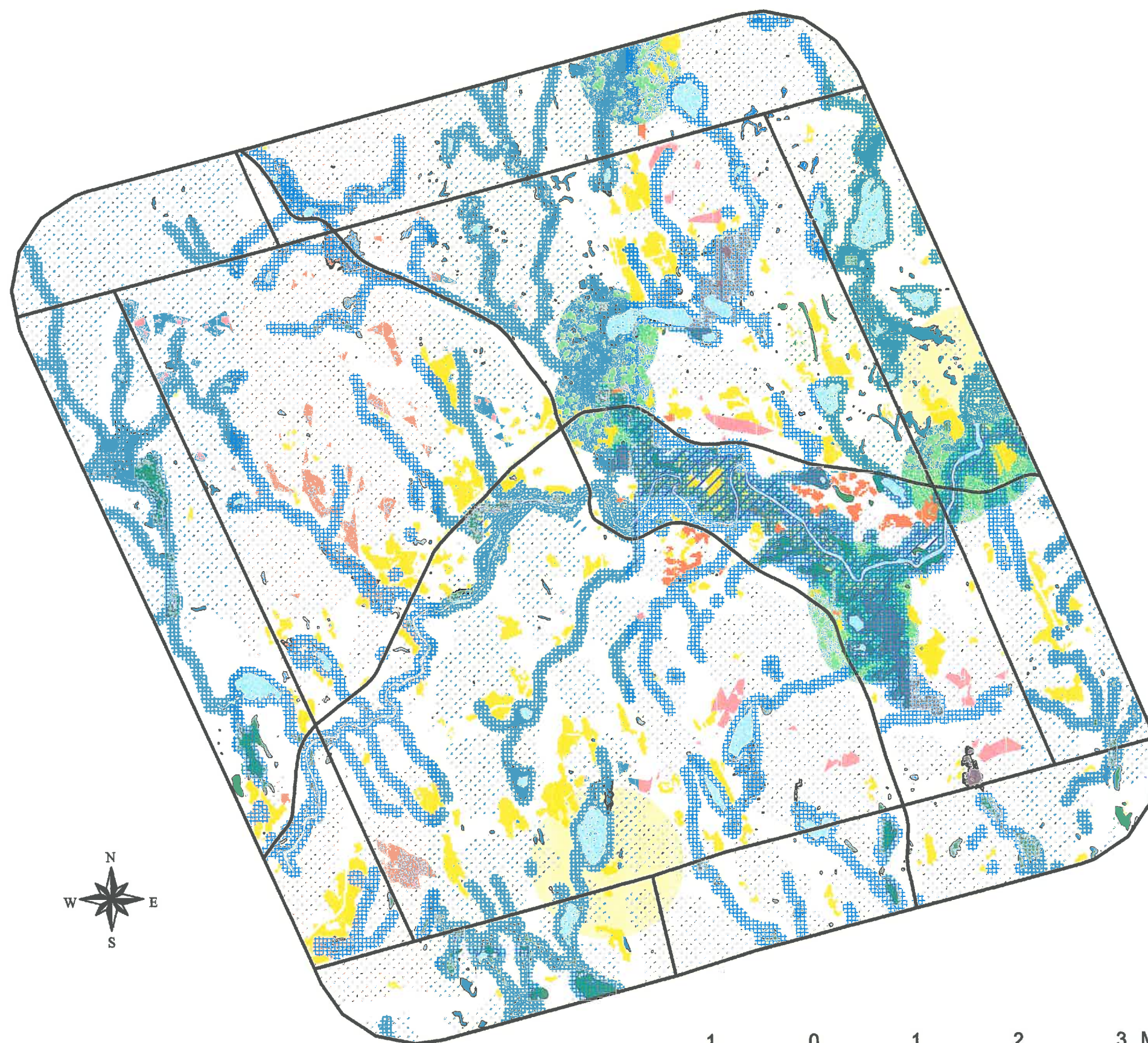
Map Created by Denise Rico for the Henniker Conservation Commission
July 30, 2001.
Revised: September 6, 2002, September 16, 2002.

Digital data in NH GRANIT represent the efforts of the contributing agencies to record information from the cited source materials. Complex Systems Research Center (CSRC), under contract to the Office of State Planning (OSP), and in consultation with cooperating agencies, maintains a continuing program to identify and correct errors in these data. Neither OSP nor CSRC make any claim as to the validity or reliability or to any implied uses of these data.

Map XI

Henniker, NH

Wildlife Habitat Composite



LEGEND

- Major Roads
- Streams
- Surface Waters
- 300' Riparian Buffer
- Palustrine Emergent Marsh
- Wetland Complexes over 20 Acres
- Other Wetlands
- Floodplains
- South-facing Slopes > 10%
- Unfragmented Lands
- Rare Plant(s), Wildlife, and/or Natural Community**
 - Precise location within circle known.
 - Occurrence within circle, but precise location not known.

This map illustrates the general locations of rare plants, wildlife, and natural communities (natural communities are different types of wetlands, forests, etc.). Precise locations are not shown due to the data's sensitive nature. The NH Natural Heritage Inventory's database contains more detailed information including locations, population sizes, and habitat descriptions.

Please contact the Natural Heritage Inventory at (603)271-3623 for more information. Wildlife occurrences are compiled and displayed in cooperation with the NH Fish & Game Department's Nongame Program, who may be reached at (603)271-2462.

DATA SOURCES:
NH GRANIT (1:24,000)

Map Created by Denise Rico for the Henniker Conservation Commission
July 30, 2001.
Revised: September 6, 2002, September 16, 2002.

Digital data in NH GRANIT represent the efforts of the contributing agencies to record information from the cited source materials. Complex Systems Research Center (CSRC), under contract to the Office of State Planning (OSP), and in consultation with cooperating agencies, maintains a continuing program to identify and correct errors in these data. Neither OSP nor CSRC make any claim as to the validity or reliability or to any implied uses of these data.

1 0 1 2 3 Miles